

GENERAL

1.2 BASIC CONSIDERATIONS (continued)

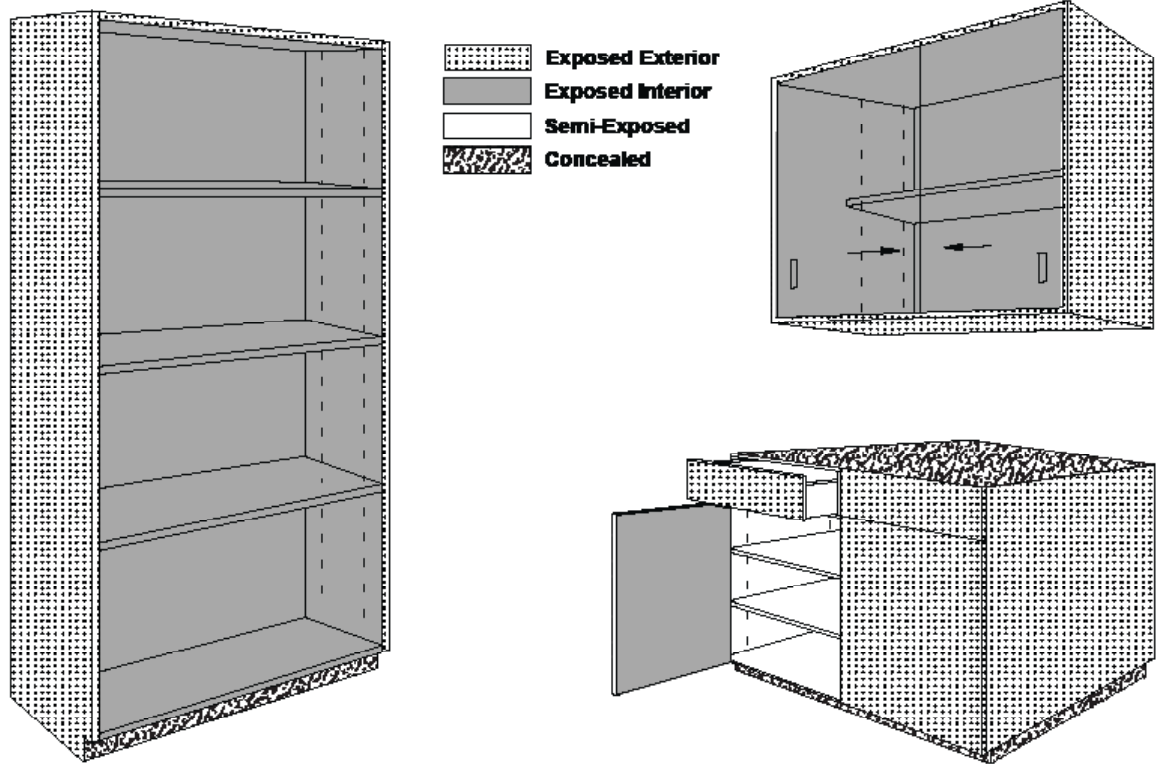
1.2.14 FINISH by surface definition (continued)

1.2.14.4 CONCEALED SURFACES for all Grades at:

1.2.14.4.1 DECORATIVE LAMINATE, WOOD, and SOLID PHENOLIC casework require:

1.2.14.4.1.1 The manufacturer's option.

1.2.15 ILLUSTRATIONS of cabinet surface terminology:



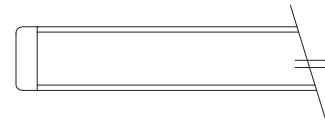
1.2.16 DOOR and applied DRAWER FRONT profiles are for illustration purposes only and are not intended to be duplicated exactly:

1.2.16.1 Common EDGE PROFILES:

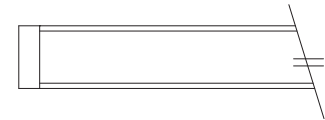
1.2.16.1.1 Square edge with thin applied band.



1.2.16.1.2 Radius edge with thick applied band.



1.2.16.1.3 Square edge with thick applied band



1.2.16.1.4 Square edge with inset band.

